

OFFICE SPACE 3,555 sqft FOR LEASE



200 Andover Park East
Suite 100
Tukwila, WA. 98188



Bldg. / Suite Information:

- Easy Access to I-5 / 405 & SR-67
- End-Cap Suite #100 - Exterior Signage
- Abundant / Free Parking
- Abundant Shopping, Walking Trails / Dine –in-Take-out.

PARK TENANTS :

- WA State DMV, Concentra Medical, Sound Credit Union, US Health Works, VI, Resorts, Benca Dentistry

Rate: 28.50 + NNN (\$11.50)

Contact Broker : Matthew Royal :

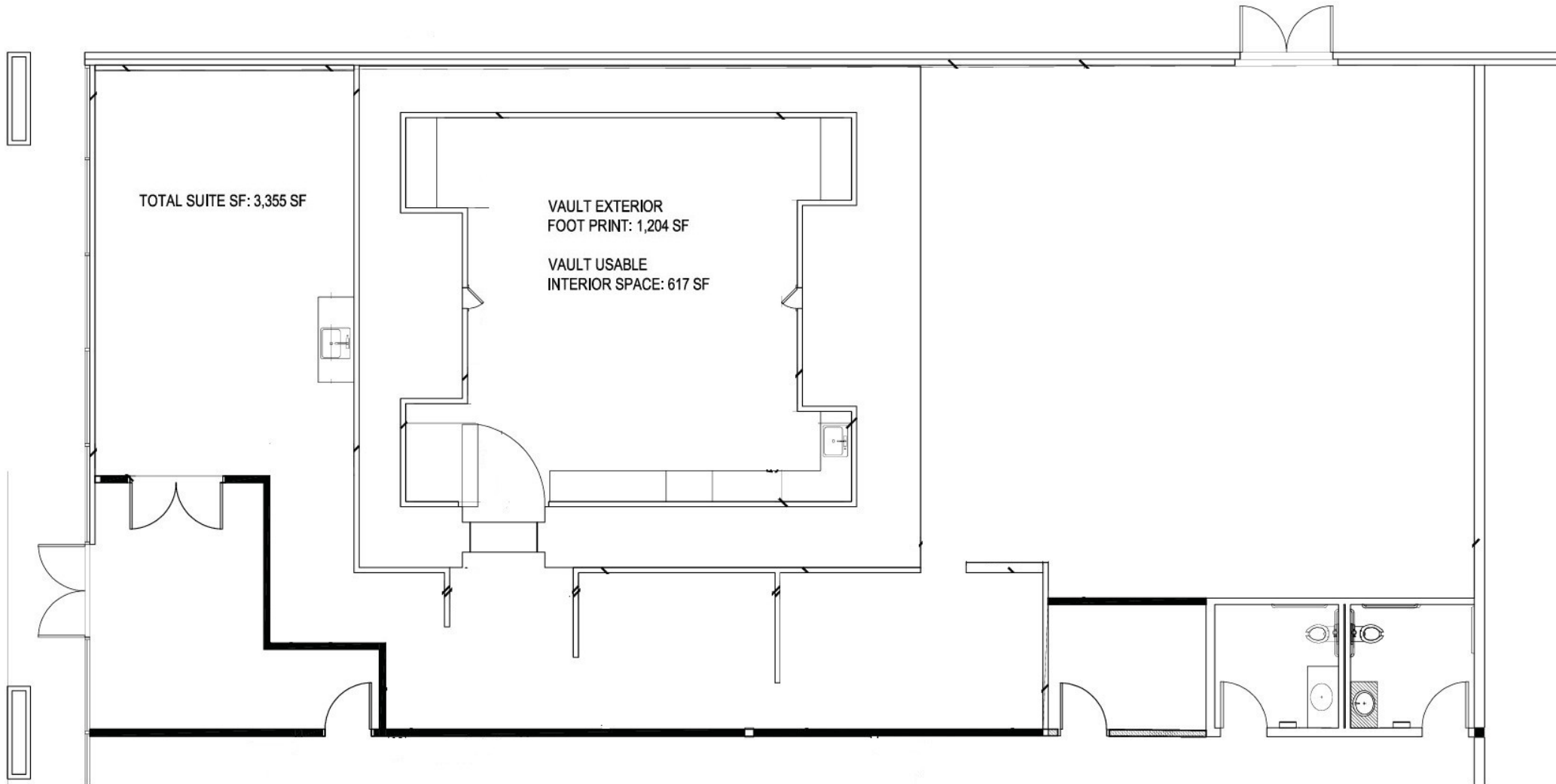
matthew@royalcommercialcorp.com / 1-425-952-4000



OFFICE SPACE 3,555 sqft FOR LEASE



*200 Andover Park East
Suite 100
Tukwila, WA. 98188*



Matthew Royal : matthew@royalcommercialcorp.com 1-425-952-4000



Royal Commercial Corp.

royalcommercialcorp.com

No warranty or representation, express or implied, is made as to the accuracy of the information contained herein, and same is submitted subject to errors omissions, change of price, rental or other conditions, withdrawal without notice, and to any specific listing conditions, imposed by our principals.