

# Office Space FOR LEASE

## Lynnwood Business Center

4208-4210 198th St, SW Lynnwood, WA. 98036



***FULL SERVICE RATE !!***

### **Bldg 4208**

<i>Suite # 108</i>	<i>Office</i>	<i>328 sqft</i>	<i>\$637.00/mo</i>
<i>Suite #202</i>	<i>Office</i>	<i>720 sqft</i>	<i>\$1,260.00/mo</i>
<i>Suite #203</i>	<i>Office</i>	<i>268 sqft</i>	<i>\$490.00/mo</i>
<i>Suite #208</i>	<i>Office</i>	<i>637 sqft</i>	<i>\$1,166.00/mo</i>

### **Bldg 4210**

<i>Suite 204</i>	<i>Office</i>	<i>393/sqft</i>	<i>\$753.00/mo</i>
<i>Suite 205</i>	<i>Office</i>	<i>377sqft</i>	<i>\$722.00/mo</i>
<i>Suite 208</i>	<i>Office</i>	<i>819/sqft</i>	<i>\$1,433.00/mo</i>



## FEATURES

- Multi-Tenant Bldg. Class B Bldg.
- Full Service Lease Agreements
- Flexible Terms / Expansion Options
- Efficient floorplans
- Easy access to I-5, 405 & Hwy 99,
- Edmonds/Lynnwood, North Seattle
- Ample / Free parking

## CONTACT

**Matthew Royal**  
matthew@royalcommercialcorp.com

**Ron Cox**  
ron@royalcommercialcorp.com

Office: 1-425-952-4000

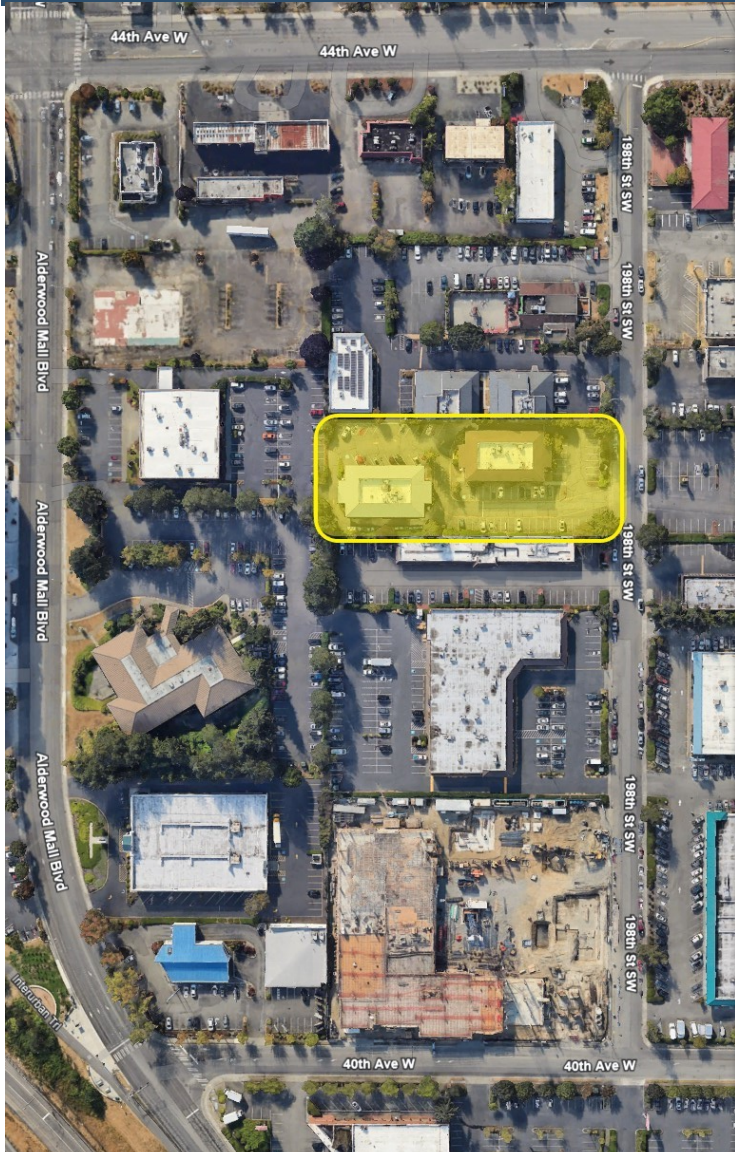


royalcommercialcorp.com

No warranty or representation, express or implied, is made as to the accuracy of the information contained herein, and same is submitted subject to errors omissions, change of price, rental or other conditions, withdrawal without notice, and to any specific listing conditions, imposed by our principals.



# Office Space FOR LEASE

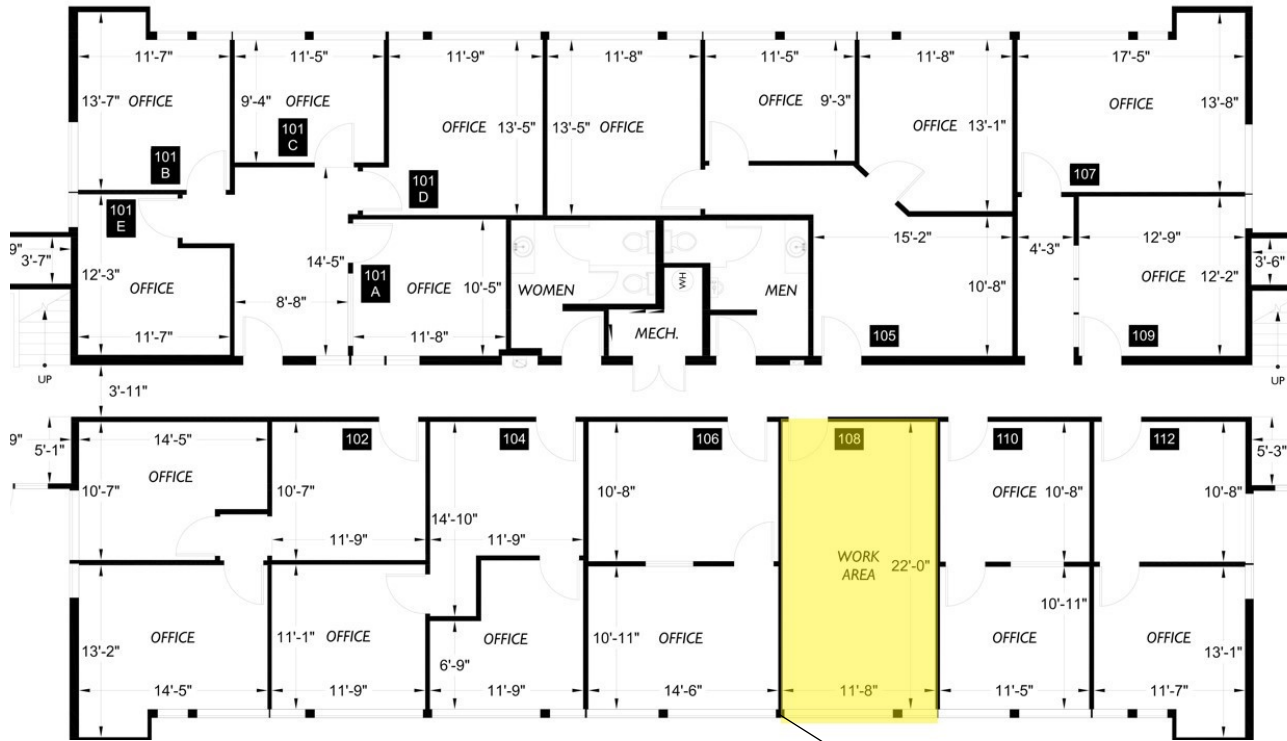




# FOR LEASE

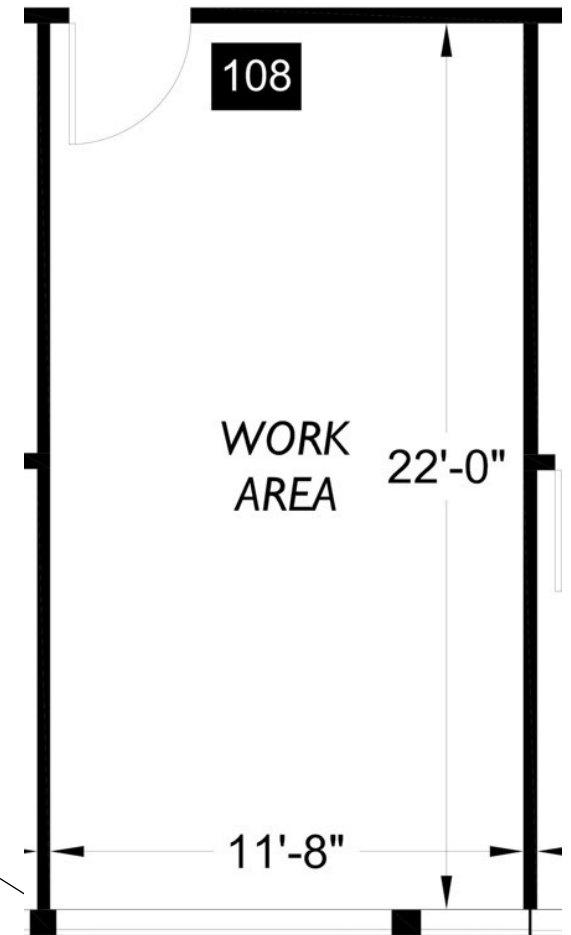
## Lynnwood Business Center

4208 198th St, SW Lynnwood, WA. 98036



### AVAILABLE SUITE / BLDG 4210

Suite	Office	Rate	Total
108	328 SF	\$1.95 SF/MO	\$637.00/mo



### CONTACT

**Matthew Royal**

matthew@royalcommercialcorp.com

**Ron Cox**

ron@royalcommercialcorp.com

**Office:** 1-425-952-4000



Royal Commercial Corp.

royalcommercialcorp.com

No warranty or representation, express or implied, is made as to the accuracy of the information contained herein, and same is submitted subject to errors omissions, change of price, rental or other conditions, withdrawal without notice, and to any specific listing conditions, imposed by our principals.

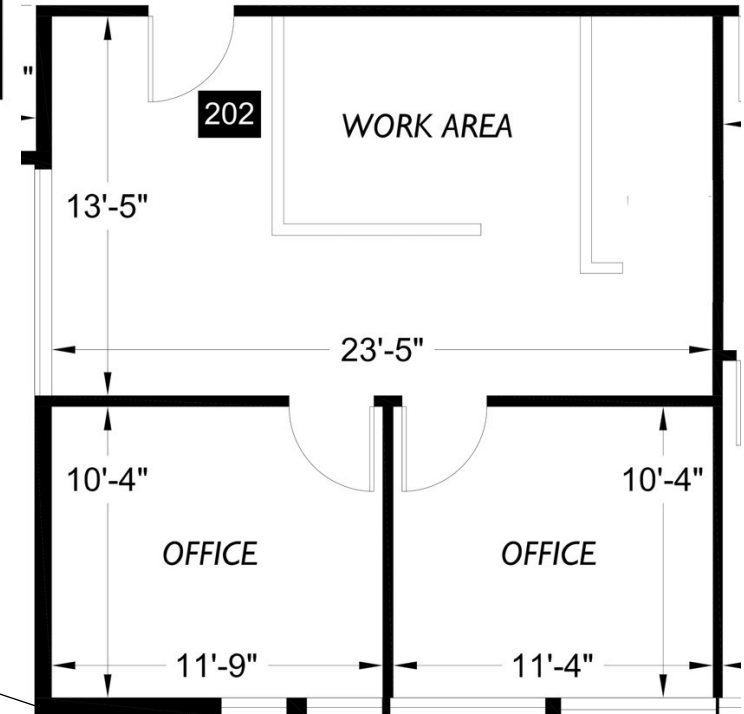
# FOR LEASE

## Lynnwood Business Center

4208 198th St, SW Lynnwood, WA. 98036



AVAILABLE SUITE / BLDG 4208			
Suite	Office	Rate	Total
202	720 SF	\$1.75 SF/MO	\$1,260 /mo



### CONTACT

**Matthew Royal**

matthew@royalcommercialcorp.com

**Ron Cox**

ron@royalcommercialcorp.com

**Office:** 1-425-952-4000

royalcommercialcorp.com



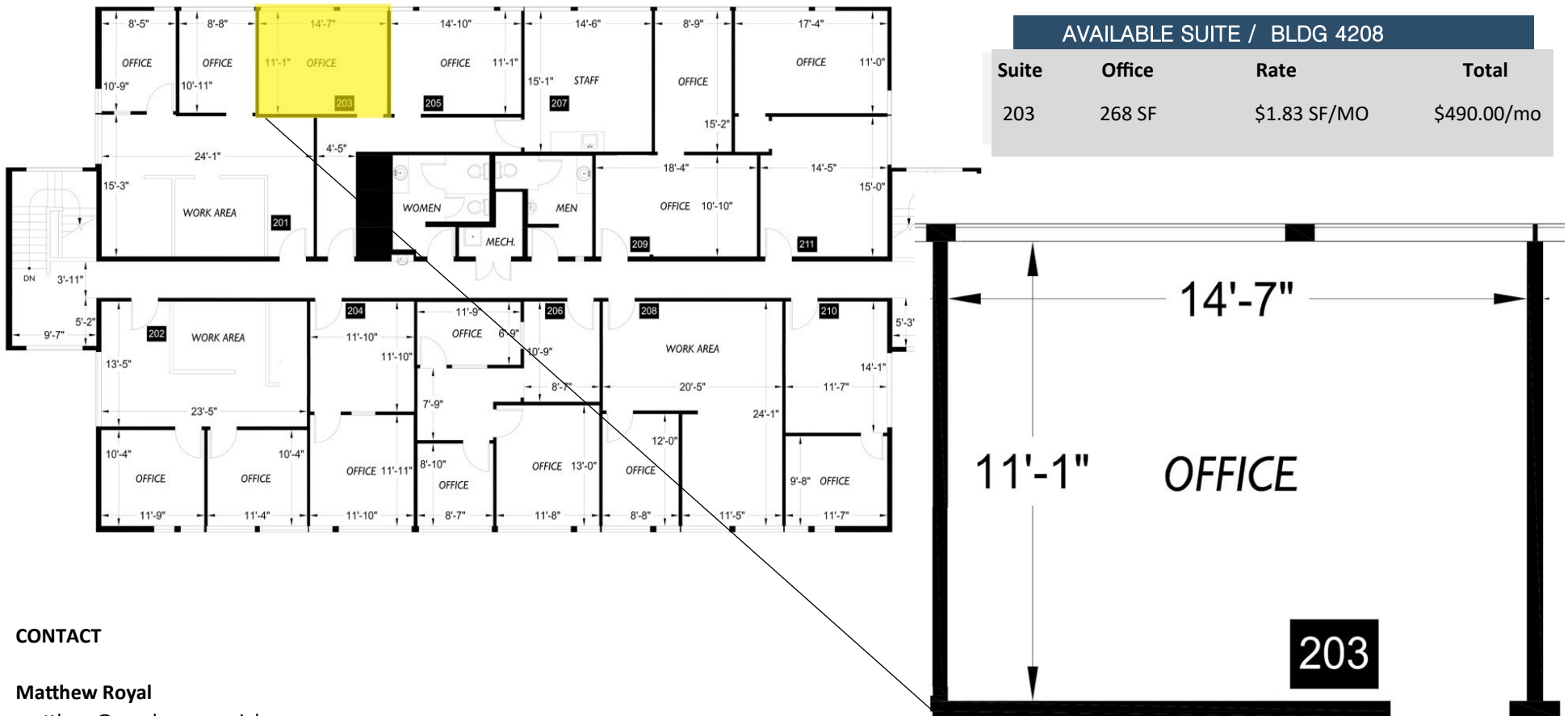
Royal Commercial Corp.

No warranty or representation, express or implied, is made as to the accuracy of the information contained herein, and same is submitted subject to errors omissions, change of price, rental or other conditions, withdrawal without notice, and to any specific listing conditions, imposed by our principals.

# FOR LEASE

## Lynnwood Business Center

4208 198th St, SW Lynnwood, WA. 98036



### CONTACT

**Matthew Royal**

matthew@royalcommercialcorp.com

**Ron Cox**

ron@royalcommercialcorp.com

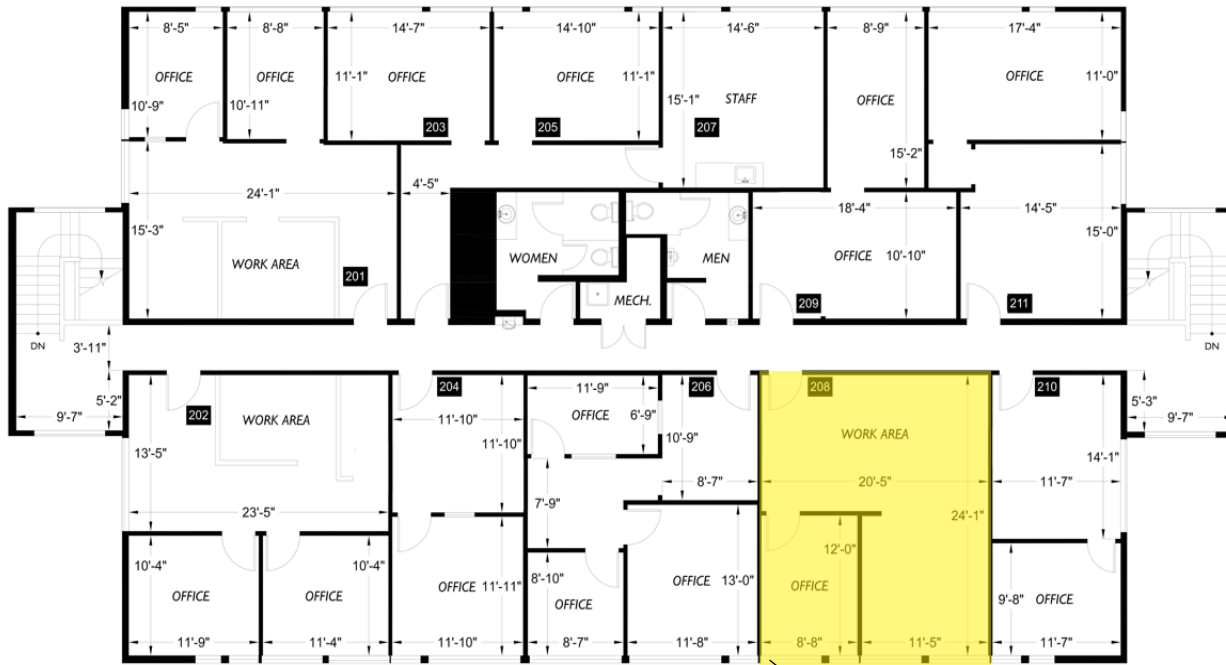
**Office:** 1-425-952-4000



# FOR LEASE

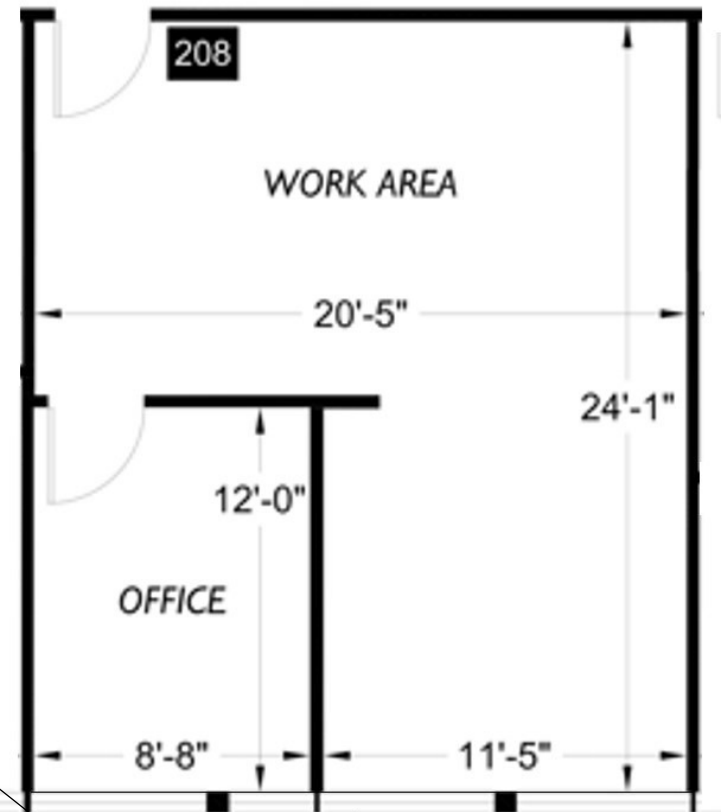
## Lynnwood Business Center

4208 198th St, SW Lynnwood, WA. 98036



### AVAILABLE SUITE / BLDG 4208

Suite	Office	Rates	Total
208	637 SF	\$1.83 SF/MO	\$1,166.00



### CONTACT

**Matthew Royal**  
matthew@royalcommercialcorp.com

**Ron Cox**  
ron@royalcommercialcorp.com

**Office:** 1-425-952-4000

royalcommercialcorp.com



No warranty or representation, express or implied, is made as to the accuracy of the information contained herein, and same is submitted subject to errors omissions, change of price, rental or other conditions, withdrawal without notice, and to any specific listing conditions, imposed by our principals.

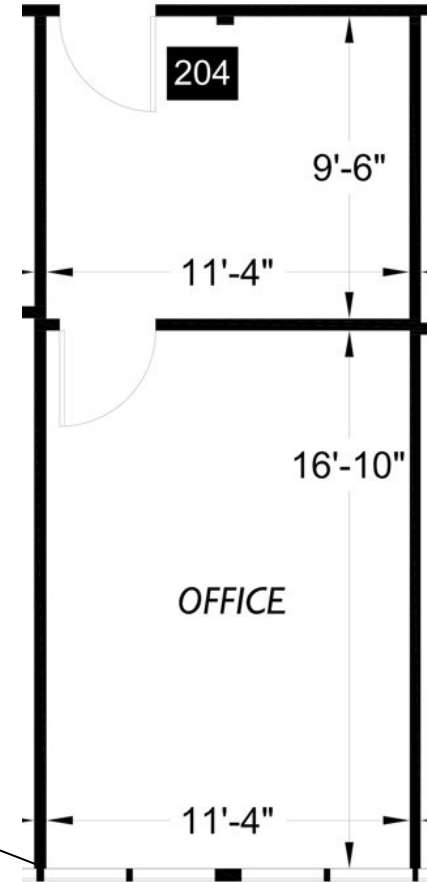
# FOR LEASE

## Lynnwood Business Center

4210 198th St, SW Lynnwood, WA. 98036

AVAILABLE SUITE / BLDG 4210

Suite	Office	Rates	Total
204	393/SF	\$1.92 SF/MO	\$753.00



### CONTACT

**Matthew Royal**

matthew@royalcommercialcorp.com

**Ron Cox**

ron@royalcommercialcorp.com

**Office:** 1-425-952-4000

royalcommercialcorp.com

No warranty or representation, express or implied, is made as to the accuracy of the information contained herein, and same is submitted subject to errors omissions, change of price, rental or other conditions, withdrawal without notice, and to any specific listing conditions, imposed by our principals.



Royal Commercial Corp.

# FOR LEASE

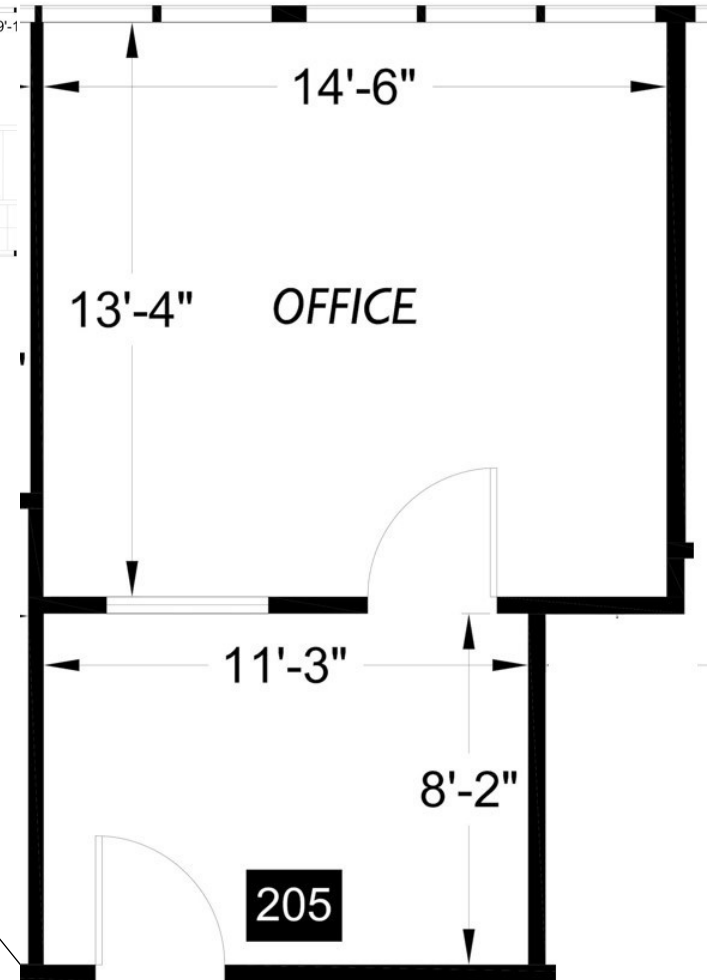
## Lynnwood Business Center

4210 198th St, SW Lynnwood, WA. 98036



### AVAILABLE SUITE / BLDG 4208

Suite	Office	Rates	Total
205	377SF	\$1.91 SF/MO	\$723.00



#### CONTACT

**Matthew Royal**  
matthew@royalcommercialcorp.com

**Ron Cox**  
ron@royalcommercialcorp.com

**Office:** 1-425-952-4000



Royal Commercial Corp.

royalcommercialcorp.com

No warranty or representation, express or implied, is made as to the accuracy of the information contained herein, and same is submitted subject to errors omissions, change of price, rental or other conditions, withdrawal without notice, and to any specific listing conditions, imposed by our principals.

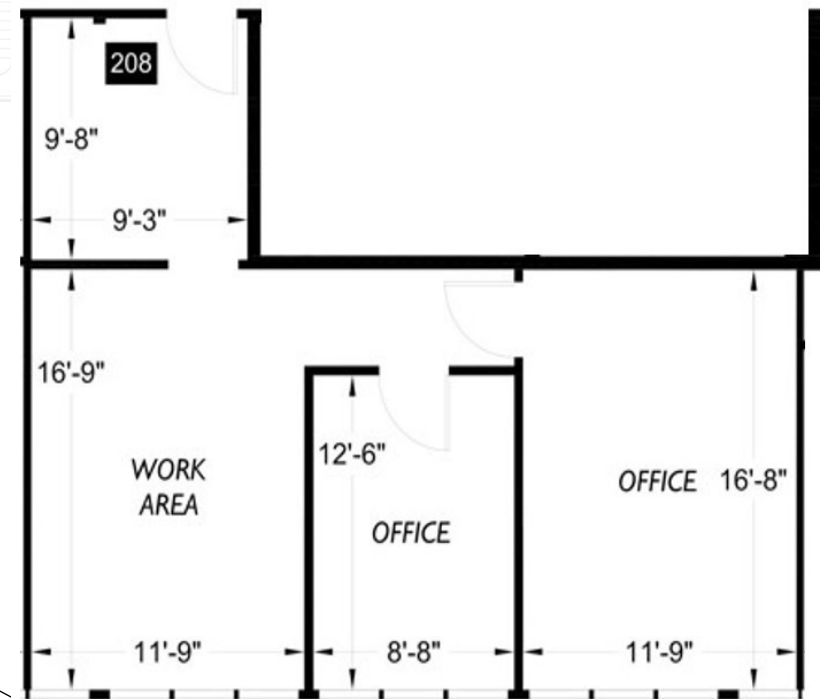


# FOR LEASE

## Lynnwood Business Center 4210 198th St, SW Lynnwood, WA. 98036



AVAILABLE SUITE / BLDG 4210			
Suite	Office	Rates	Total
208	819 SF	\$1.875SF/MO	\$1,433.00



### CONTACT

**Matthew Royal**  
matthew@royalcommercialcorp.com

**Ron Cox**  
ron@royalcommercialcorp.com

**Office:** 1-425-952-4000

