



FOR LEASE
3927 Colby
Avenue
Everett,
Washington
98021

COLBY AVENUE

Great layout for professional services space in stand-alone building off Colby Ave, in Everett!

- ◆ 6 Offices, 2 conference rooms, kitchen, storage
 - ◆ High visibility on Colby Ave
 - ◆ Port Gardner area
 - ◆ Easy Access to freeways
 - ◆ 3-5 Reserved parking stalls

\$1.40+ NNN 's (\$0.57) sqft

Two Floors Combined

2,278 SQFT



Matthew Royal:
matthew@royalcommercialcorp.com

royal commercial corp.
611 Market Street | Suite 8
Kirkland | WA 98033
425 - 952 - 4000

www.royalcommercialcorp.com



FOR LEASE
3927 Colby
Avenue
Everett,
Washington
98021

COLBY AVENUE



Matthew Royal:
matthew@royalcommercialcorp.com

royal commercial corp.
611 Market Street | Suite 8
Kirkland | WA 98033
425 - 952 - 4000

www.royalcommercialcorp.com

No warranty or representation, express or implied, is made as to the accuracy of the information contained herein, and same is submitted subject to errors omissions, change of price, rental or other conditions, withdrawal without notice, and to any specific listing conditions, imposed by our principals.



FOR LEASE
3927 Colby
Avenue
Everett,
Washington
98021

COLBY AVENUE



Office Highlights

- Highly visible frontage on Colby Ave
- Stand- Alone Building with 6 offices
- Large kitchen, ample storage
- Exterior signage available
 - 3+ dedicated parking
- TI's Available with Long Lease Term
- Adjacent to Everett Clinic & Major Bus Lines
 - Immediate Availability

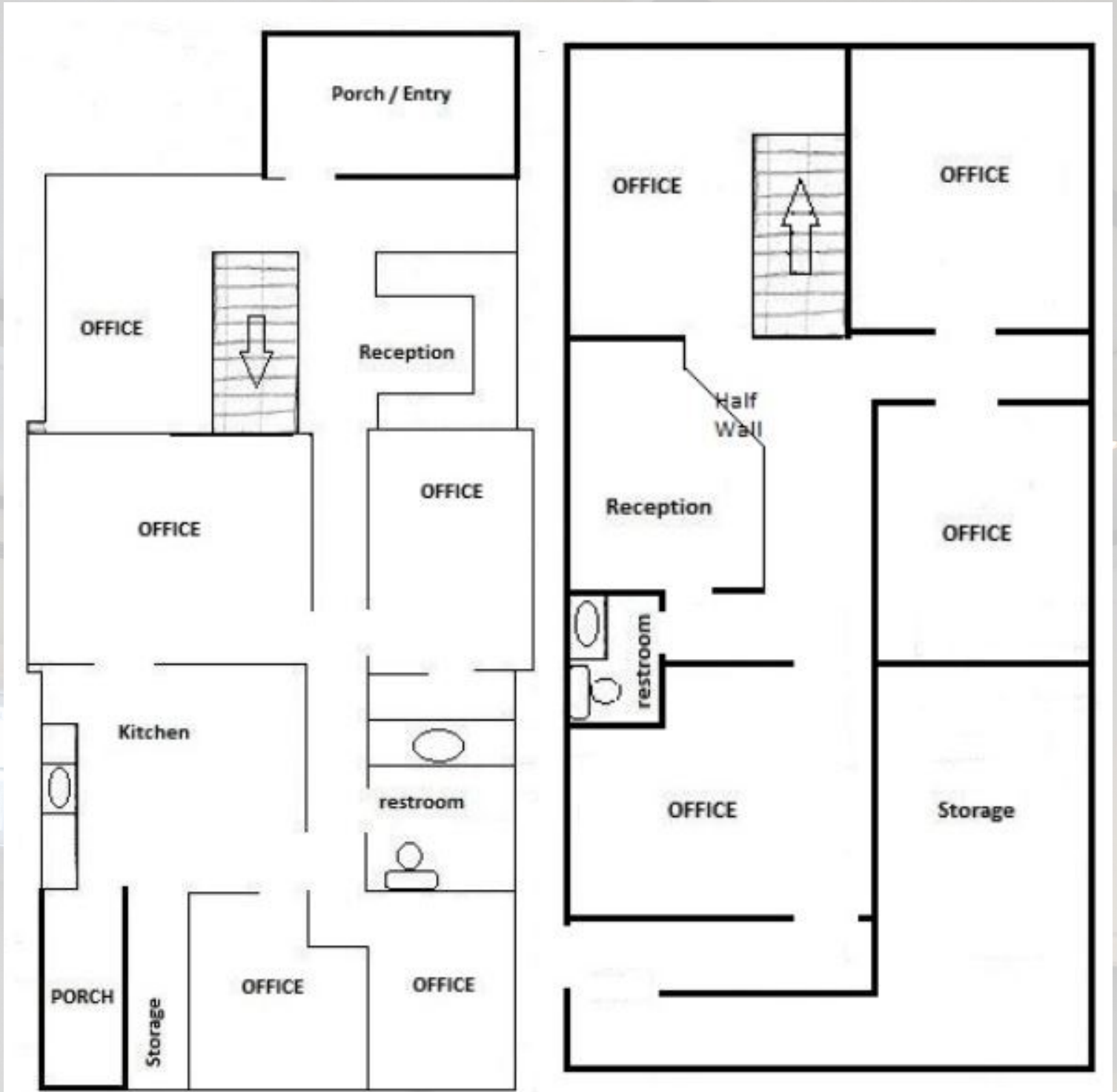


Matthew Royal:
matthew@royalcommercialcorp.com

royal commercial corp.
611 Market Street | Suite 8
Kirkland | WA 98033
425 - 952 - 4000

www.royalcommercialcorp.com

COLBY AVENUE



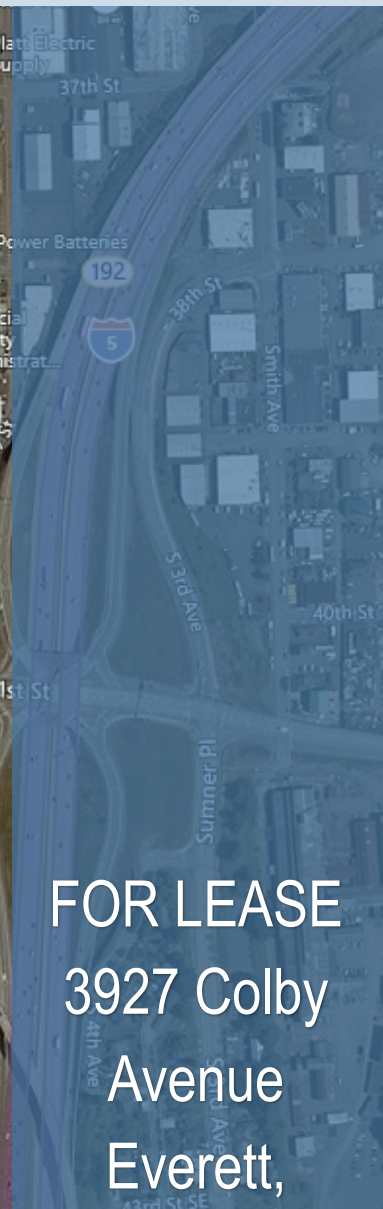
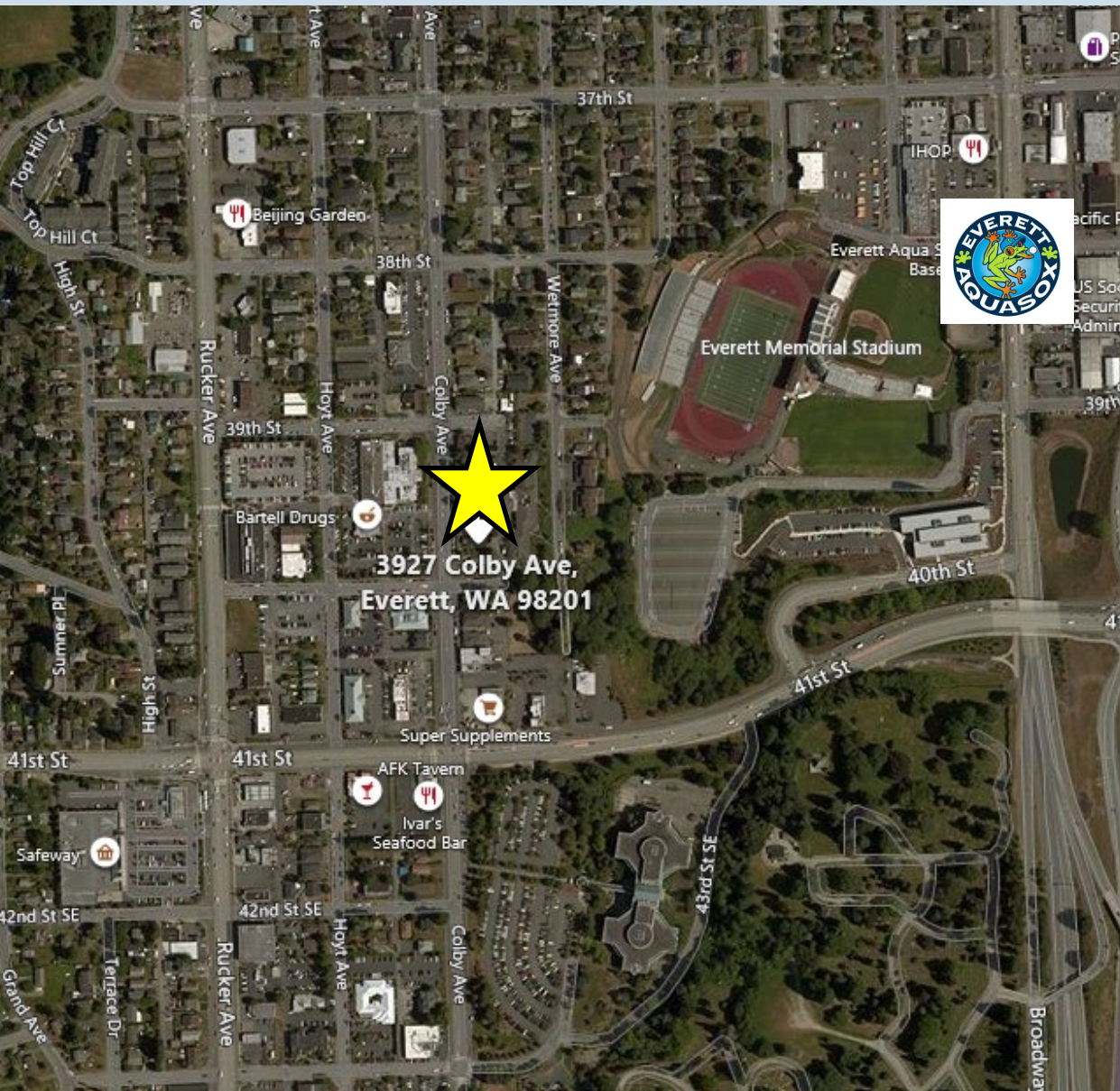
2,278 sqft



Matthew Royal:
matthew@royalcommercialcorp.com

royal commercial corp.
611 Market Street | Suite 8
Kirkland | WA 98033
425 - 952 - 4000
www.royalcommercialcorp.com

COLBY AVENUE



FOR LEASE
3927 Colby
Avenue
Everett,
Washington
98021



Matthew Royal:
matthew@royalcommercialcorp.com

royal commercial corp.
611 Market Street | Suite 8
Kirkland | WA 98033
425 - 952 - 4000
www.royalcommercialcorp.com

No warranty or representation, express or implied, is made as to the accuracy of the information contained herein, and same is submitted subject to errors omissions, change of price, rental or other conditions, withdrawal without notice, and to any specific listing conditions, imposed by our principals.