

OFFICE FOR LEASE

The Broadway Professional Building

1520 Broadway, Everett WA. 98201



Suite/Rates:

Suite #200 - 4,100 sqft

\$ tbd /NNN

NNN's estimated at \$7.61/sqft yr, w/ Tenant paying separately metered PSE and janitorial.

Elevator w/walk-up to Suite

Perfect for professional office /services/ Legal / CPA /Engineering.

Features:

Locally Owned & Managed

2nd Floor Suite—office & open configuration

Flexible terms—3-5-7 yr terms available

Signage Available / High Traffic Counts (I-5 visible)

High end finishes

Free Parking 3:1000, w/ abundant street parking

Available September 1st, 2026

CONTACT

Matthew Royal / Managing Broker

425.952.4000

matthew@royalcommercialcorp.com

royalcommercialcorp.com

No warranty or representation, express or implied, is made as to the accuracy of the information contained herein, and same is submitted subject to errors omissions, change of price, rental or other conditions, withdrawal without notice, and to any specific listing conditions, imposed by our principals.

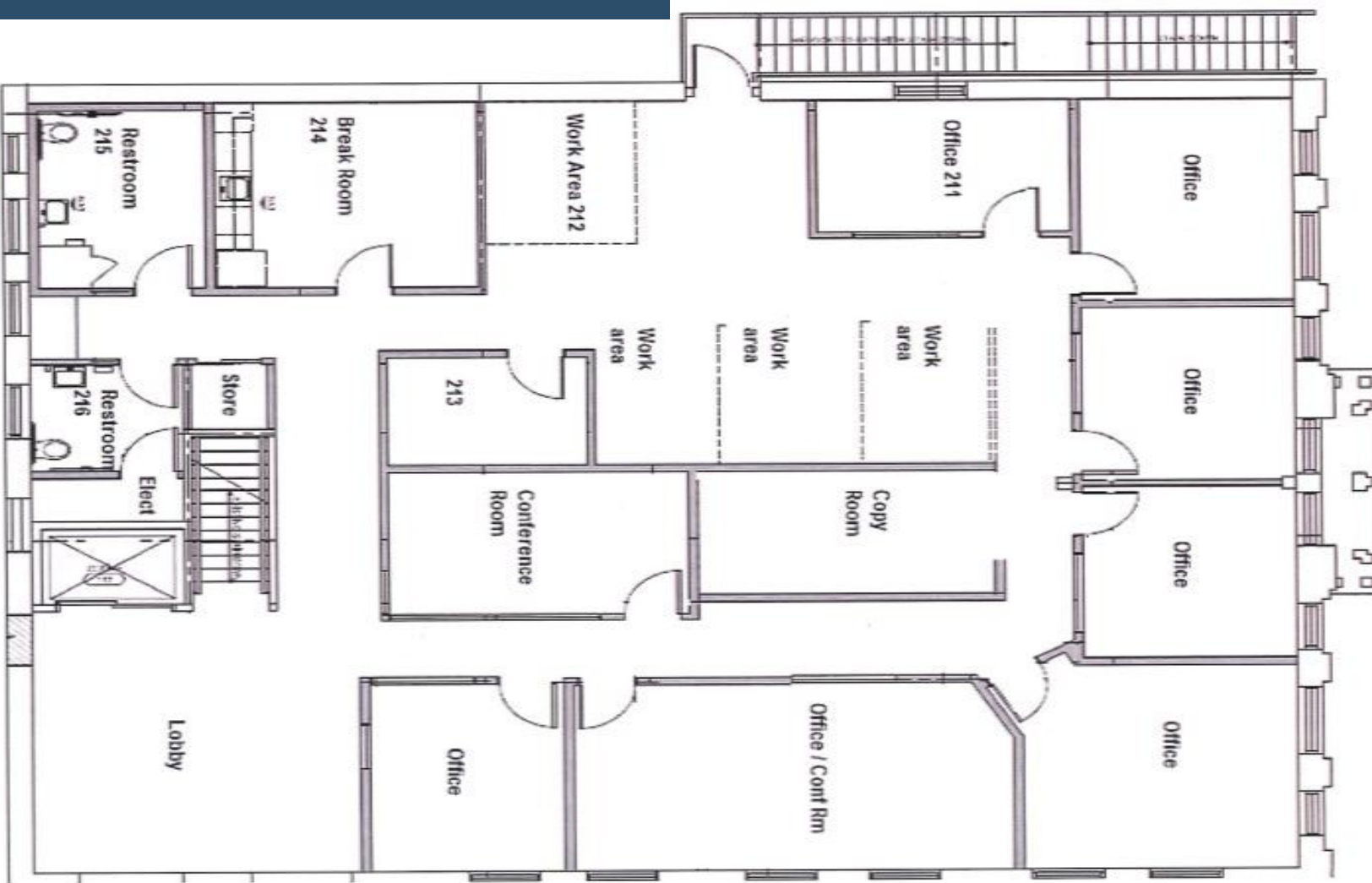


Royal Commercial Corp.

OFFICE FOR LEASE

Hewitt Ave Building

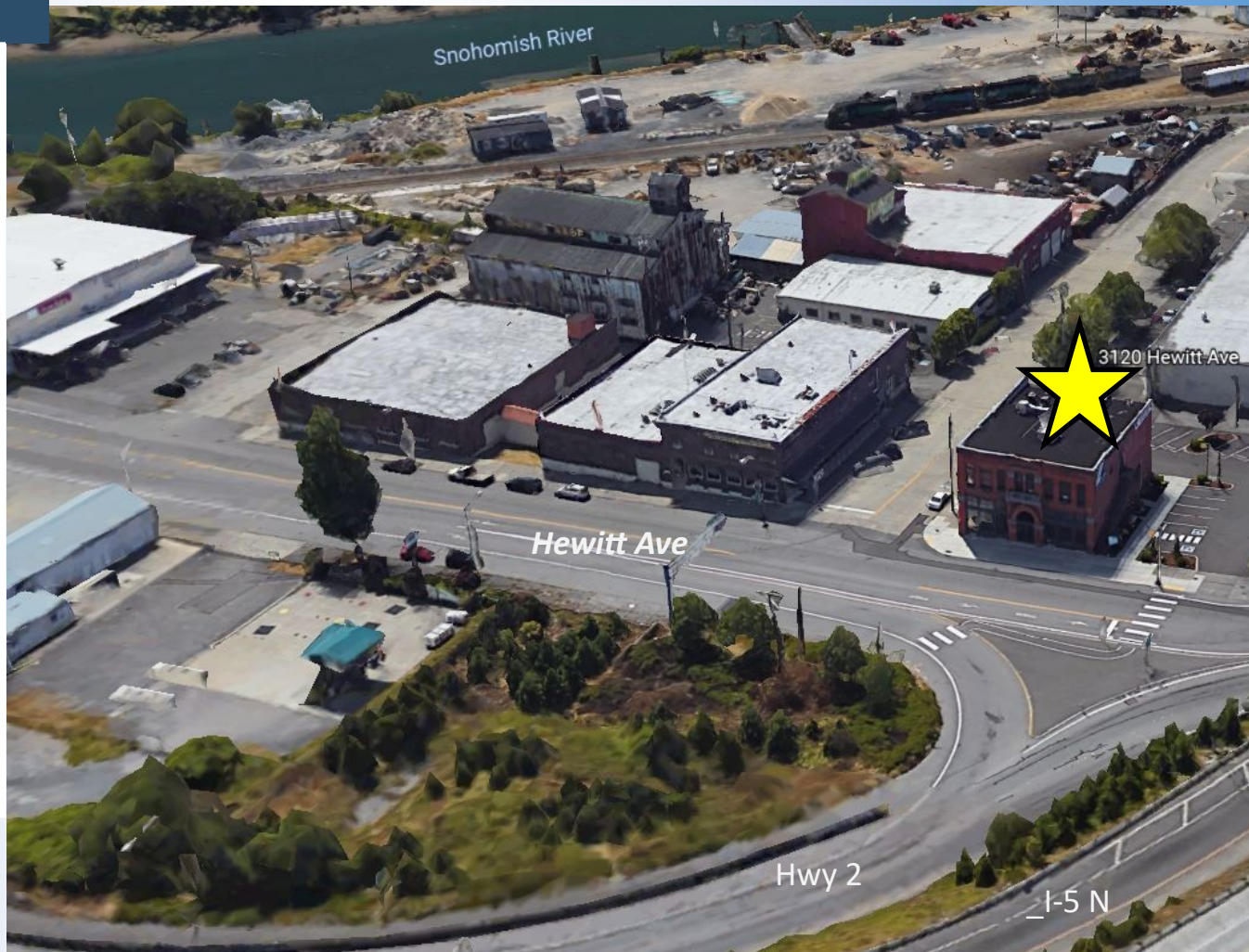
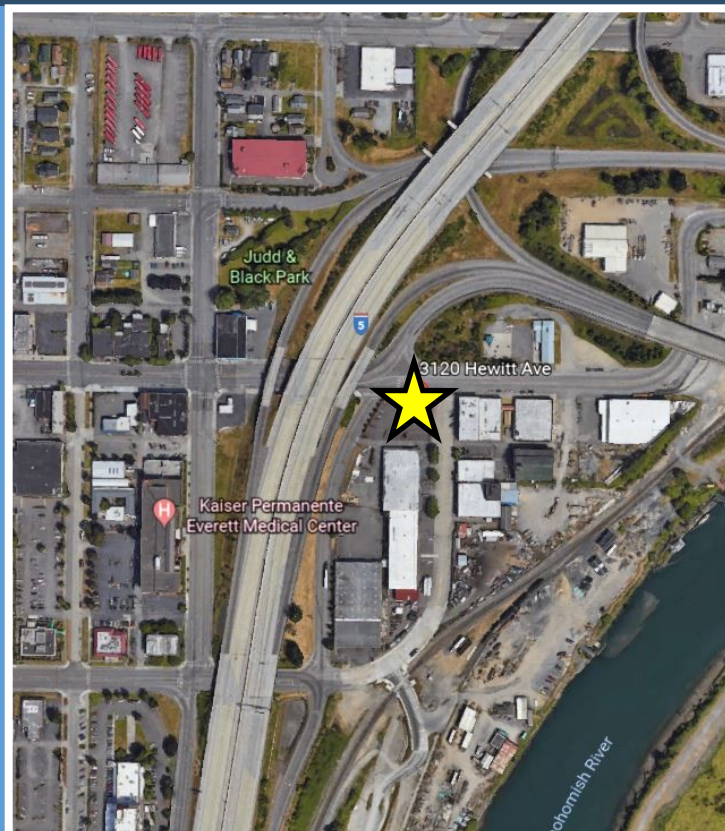
3120 Hewitt Ave, Everett WA. 98201



OFFICE FOR LEASE

Hewitt Ave Building

3120 Hewitt Ave, Everett WA. 98201



Matthew Royal—Matthew@royalcommercialcorp.com



Royal Commercial Corp.

royalcommercialcorp.com

No warranty or representation, express or implied, is made as to the accuracy of the information contained herein, and same is submitted subject to errors omissions, change of price, rental or other conditions, withdrawal without notice, and to any specific listing conditions, imposed by our principals.